

INCANDESCENT COURTESY LIGHTS - MAINTENANCE PRACTICES**1. General**

A. This section gives the procedures for the removal/installation of the incandescent courtesy lights and the timer.

2. Courtesy Light Removal/Installation

A. Remove Courtesy Light (Refer to Figure 201).

- (1) Remove screws (14) securing plate (12) and remove plate.
- (2) Pull pin (3) from socket (2), and remove entire assembly from wing.
- (3) Remove screws (13), nuts (5 and 6) and remove plate (12) from shield assembly (7).
- (4) Press in on bulb (11) and turn counterclockwise to remove bulb from socket (8).

B. Install Courtesy Light (Refer to Figure 201).

- (1) Insert bulb (11) into socket (8), press bulb into socket slightly, and turn clockwise.
- (2) Attach shield assembly (7) to plate (12) using screws (13), nuts (5 and 6), making sure ground wire (4) is connected as shown.
- (3) Insert pin (3) into socket (2).
- (4) Secure plate (12) by using screws (14).

3. Timer Removal/Installation

A. Remove Timer (Refer to Figure 201).

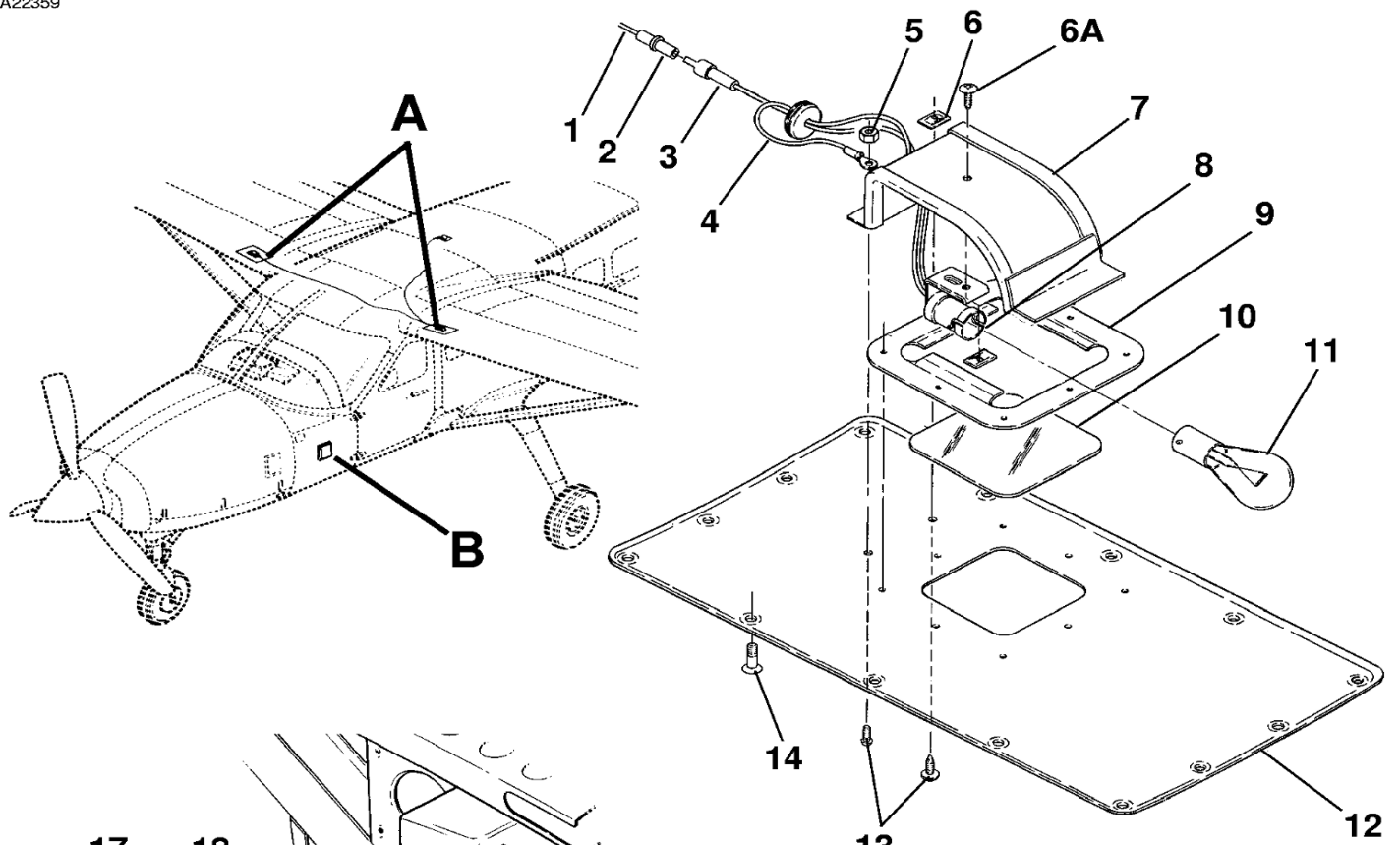
- (1) Disconnect electrical plug (17).
- (2) Remove four screws (16) securing timer (15).
- (3) Remove timer (15) from brackets (18).

B. Install Timer (Refer to Figure 201).

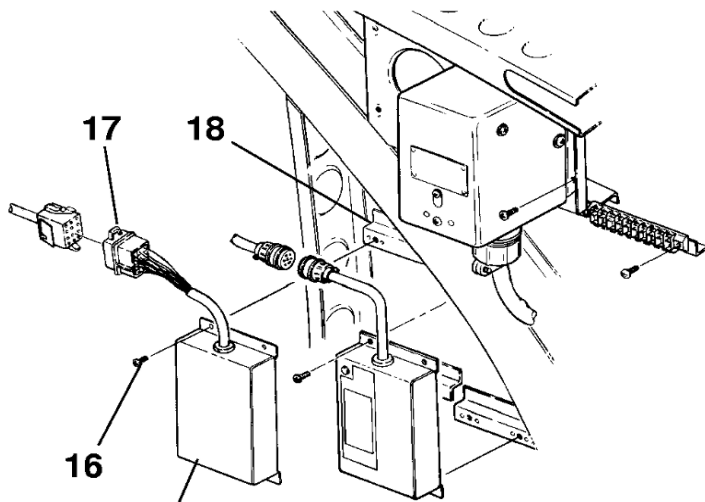
- (1) Position timer (15) to brackets (18).
- (2) Install four screws (16) securing timer (15).
- (3) Connect electrical plug (17).

Figure 201 : Sheet 1 : Courtesy Lights Installation

A22359



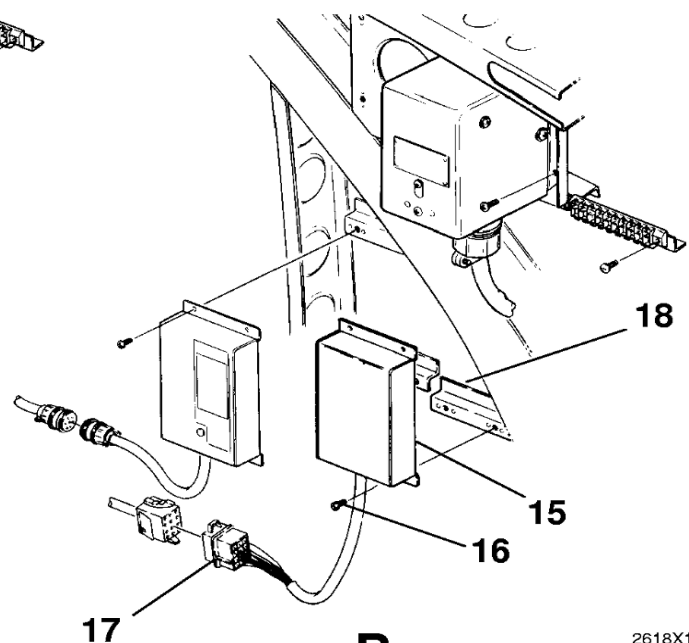
DETAIL A



DETAIL B

15 AIRPLANES 20800020 AND ON
 AND 208B0001 AND ON

- | | |
|----------------|---------------------|
| 1. WIRE | 10. LENS |
| 2. SOCKET | 11. BULB |
| 3. PIN | 12. PLATE |
| 4. GROUND WIRE | 13. SCREW |
| 5. NUT | 14. SCREW |
| 6. NUT | 15. TIMER |
| 6A. SCREW | 16. SCREW |
| 7. SHIELD | 17. ELECTRICAL PLUG |
| 8. SOCKET | 18. BRACKET |
| 9. RETAINER | |



DETAIL B

15 AIRPLANES 20800001 THRU 20800019

2618X1168
 A26183002
 B26183004
 B2618X3016